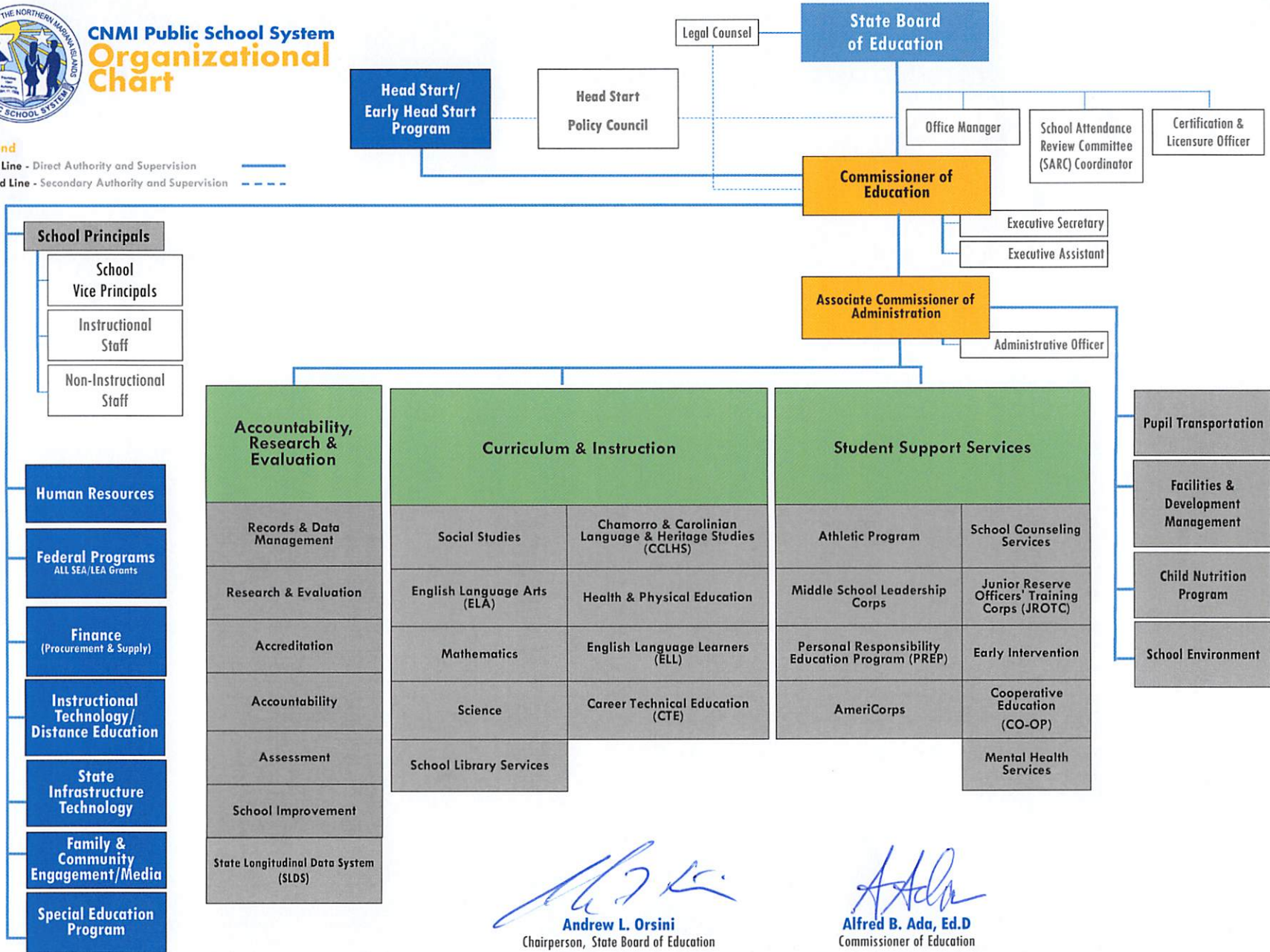




CNMI Public School System Organizational Chart

Legend

Solid Line - Direct Authority and Supervision
Dotted Line - Secondary Authority and Supervision



Andrew L. Orsini
Andrew L. Orsini
 Chairperson, State Board of Education

Alfred B. Ada, Ed.D
Alfred B. Ada, Ed.D
 Commissioner of Education

Approved by the 17th CNMI State Board of Education on 05/21/2021.